

Protein Precipitation Plate

SHIMSEN Bioanalytical Functional Plates

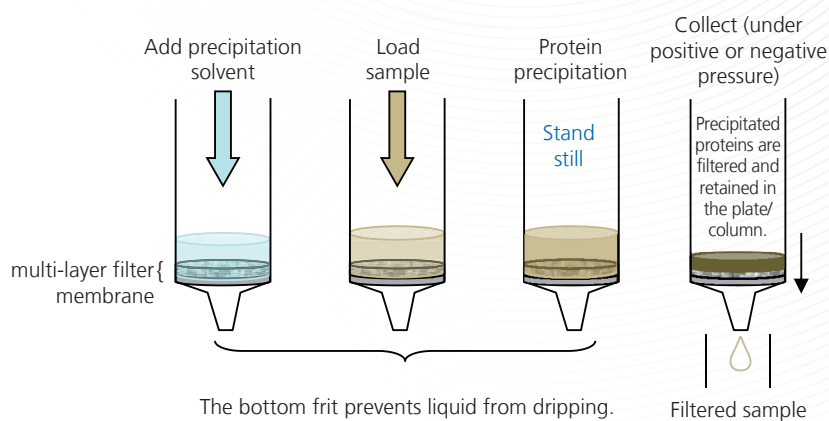
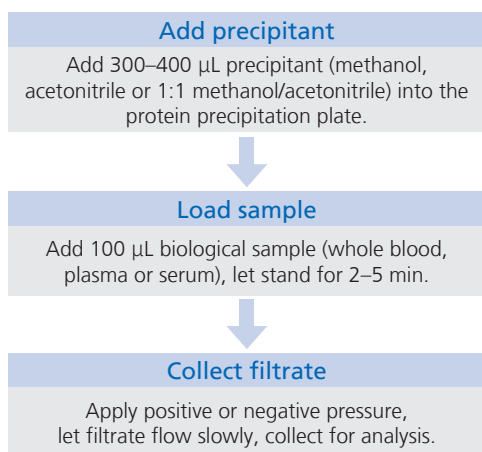
Protein precipitation is a routine method for purification and target extraction of biological samples (whole blood, plasma and serum) in pharmaceutical analysis. It effectively removes proteins from biological samples, reduces matrix effects, and improves the stability of detection data.

Product Features

- Rapid & High-Throughput**
 96-well simultaneous processing replaces single-tube operation. Compatible with positive/negative pressure or automated liquid handling stations, greatly saving pretreatment time.
- No Solvent Leakage**
 Patented sorbent technology ensures no leakage of pre-added organic reagents, prolongs sample precipitation time and delivers optimal precipitation performance.
- No Cross-Contamination**
 Special filter membrane effectively intercepts precipitants; suitable for pharmacokinetic studies and clinical testing applications.



General Operating Procedure



*Note: If purification is insufficient, after standing, vortex at 1000 r/min for 4 min on a multi-function vortex mixer.

Product Information:

Cat. No.	Description	Package
380-05120-03	SHIMSEN Protein Precipitation 96-well plate, 2mL, 1/pkg	1

Positive pressure devices for multiple SPE cartridges are also available. For details, consult your local sales representative.

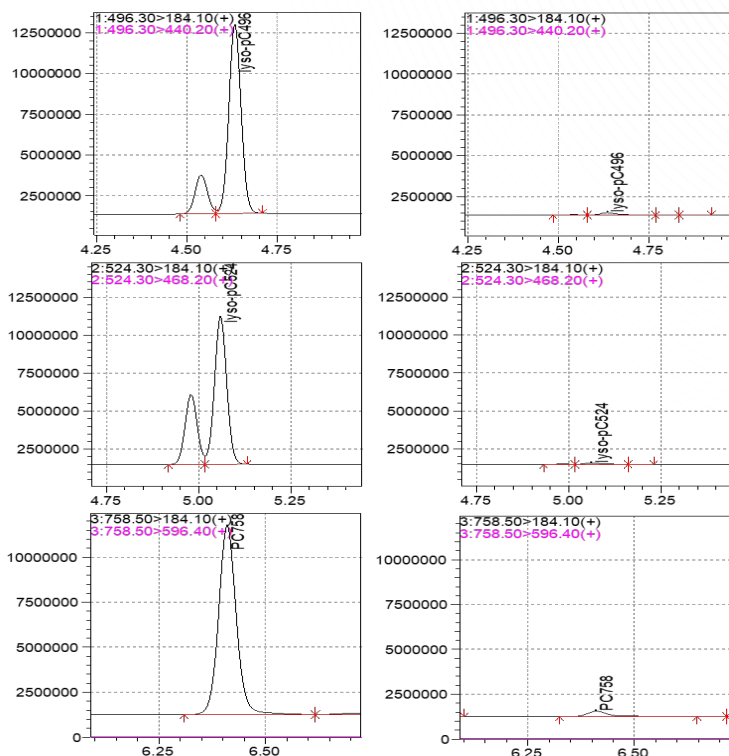
Phospholipid Removal Plate

SHIMSEN Bioanalytical Functional Plates

No complicated activation or washing steps; compatible with post-protein precipitation for integrated workflow. Specifically adsorbs various phospholipid impurities, retains target analytes, eliminates matrix effects, and significantly improves MS detection stability and data accuracy.

Product Features

- Suitable for plasma, whole blood, tissue and other protein- and phospholipid-rich samples
- Universal for polar, non-polar, acidic and basic compound analysis
- Fast, simple, high-throughput
- Effectively eliminates matrix effects from proteins and phospholipids
- High recovery
- Excellent reproducibility



Comparison of Response Differences of Selected Phospholipids in Bovine Plasma Before and After Purification (Left column: Untreated; Right column: Treated)

Pipette 400 μ L of 1% formic acid in acetonitrile into each well of the phospholipid removal plate.

Pipette 100 μ L plasma sample into the same well.

Aspirate and dispense 3–5 times or vortex to mix.

Place the plate on a collection plate; push liquid through at 3–5 drops/sec using positive pressure.

Collect all effluent for analysis.

General Operating Procedure

Brand	Compounds	Removal Rate /%	RSD
SHIMSEN	PC496, PC524	96.4-99.4	0.19-0.31
Brand O	and others	2.1-25.7	3.5-8.6

Performance Comparison

Precautions

- Plasma / tissue loading volume: 0.1–0.5 mL
- Urine loading volume: \leq 0.2 mL
- Mixture-to-sample ratio: 1:2 to 1:4

Product Information:

Cat. No.	Description	Package
380-05120-04	SHIMSEN Phospholipid Removal 96-well plate, 2mL, 1/pkg	1



Shimadzu (Shanghai) Global Laboratory Consumables Co., Ltd.

global.shimadzu-sglc.com
Contact: contact@sglc.shimadzu.com.cn

The content of this publication shall not be reproduced, altered or sold for any commercial purpose without the written approval of Shimadzu. See <http://www.shimadzu.com/about/trademarks/index.html> for details.

Third party trademarks and trade names may be used in this publication to refer to either the entities or their products/services, whether or not they are used with trademark symbol "TM" or "®".

Shimadzu disclaims any proprietary interest in trademarks and trade names other than its own.

The information contained herein is provided to you "as is" without warranty of any kind including without limitation warranties as to its accuracy or completeness. Shimadzu does not assume any responsibility or liability for any damage, whether direct or indirect, relating to the use of this publication. This publication is based upon the information available to Shimadzu on or before the date of publication, and subject to change without notice.